



jordan fishwick

11 Charlestown Road, Glossop, SK13 8JN

£145,000

- Competitively Priced Mid Terraced House
- EPC & Council Tax B
- Scope for Improvement
- Useful Attic Space

We have used AI to reveal the properties hidden potential, take a look! With scope for further improvement, a competitively priced, stone built mid terraced house, within Glossop town centre and only a short walk from the railway station. Offered for sale with No Onward Chain the property briefly comprises of a front lounge with wood burning stove, a dining kitchen at the rear, two first floor bedrooms, bathroom with shower and a spiral staircase leads up to a useful attic space with skylight windows. Gas central heating, pvc double glazing and rear yard area. Energy Rating

GROUND FLOOR

Lounge

13'5 x 13'0

Pvc front door, pvc double glazed front window, central heating radiator, wood burning stove and fireplace, electric and gas meter cupboards

Dining Kitchen

13'2 x 12'1 (less stairs)

Fitted base cupboards and drawers, built-in electric oven, plumbing for an automatic washing machine, work tops over with an inset one and a half bowl stainless steel sink unit, gas hob, wall cupboards, ideal gas fired combination boiler and central heating radiator, pvc double glazed rear window and external rear door, open tread stairs leading to:

FIRST FLOOR

Landing

Spiral stairs leading to the attic, doors to:

Bedroom One

13'6 x 9'7 (max) 8'1 (min)

Pvc double glazed front window and central heating radiator.

Bedroom Two

8'8 x 7'3

Pvc double glazed rear window, central heating radiator and storage cupboard.

Bathroom

A white panelled bath with shower over, pedestal wash hand basin and close coupled wc, central heating radiator.

SECOND FLOOR

Attic

Two double glazed skylight windows.

OUTSIDE

Rear Yard

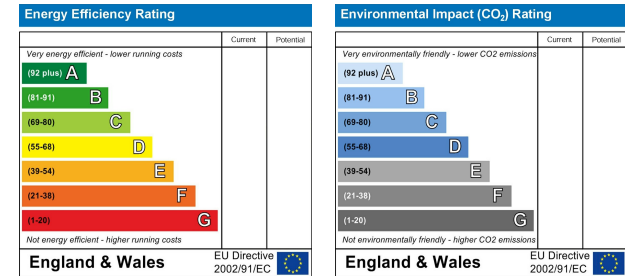
Enclosed rear Yard.

Our ref : Cms/cms: 0401/26

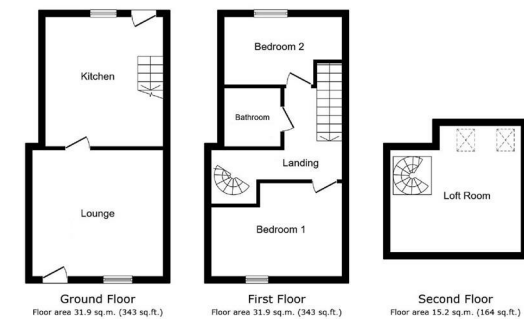
Note - Anti Money Laundering

To be able to sell or purchase a property in the United Kingdom all agents have a legal requirement to conduct Identity checks on all customers involved in the transaction to fulfil their obligations under Anti Money Laundering regulations. We outsource this check to a third party and a charge will apply. Ask the branch for further details.

- Two Bedrooms
- No Onward Chain



These particulars are believed to be accurate but they are not guaranteed and do not form a contract. Neither Jordan Fishwick nor the vendor or lessor accept any responsibility in respect of these particulars, which are not intended to be statements or representations of fact and any intending purchaser or lessee must satisfy himself by inspection or otherwise as to the correctness of each of the statements contained in these particulars. Any floorplans on this brochure are for illustrative purposes only and are not necessarily to scale



Total floor area: 79.0 sq.m. (851 sq.ft.)
This floor plan is for illustrative purposes only. It is not drawn to scale. Any measurements, floor areas (including any total floor area), contents and orientations are approximate. No floor area should be relied upon for legal purposes and should not form any part of any agreement. No liability is taken for any errors or omissions. A party must refer to the actual floor plan for details. Floor area is measured in accordance with the Land Registry's rules.



These particulars are believed to be accurate but they are not guaranteed and do not form a contract. Neither Jordan Fishwick nor the vendor or lessor accept any responsibility in respect of these particulars, which are not intended to be statements or representations of fact and any intending purchaser or lessee must satisfy himself by inspection or otherwise as to the correctness of each of the statements contained in these particulars. Any floorplans on this brochure are for illustrative purposes only and are not necessarily to scale.

Offices at: Chorlton, Didsbury, Disley, Hale, Glossop, Macclesfield, Manchester Deansgate, Manchester Whitworth Street, New Mills, Sale, Wilmslow and Withington

44 High St W, Glossop SK13 8BH

01457 858 888

glossop@jordanfishwick.co.uk
www.jordanfishwick.co.uk